

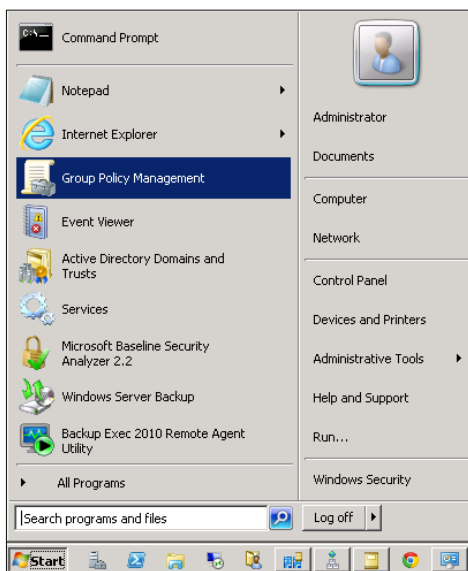


UNIVERSIDAD CENTRAL DE VENEZUELA  
RECTORADO  
DIRECCIÓN DE TECNOLOGÍA DE  
INFORMACIÓN Y COMUNICACIONES

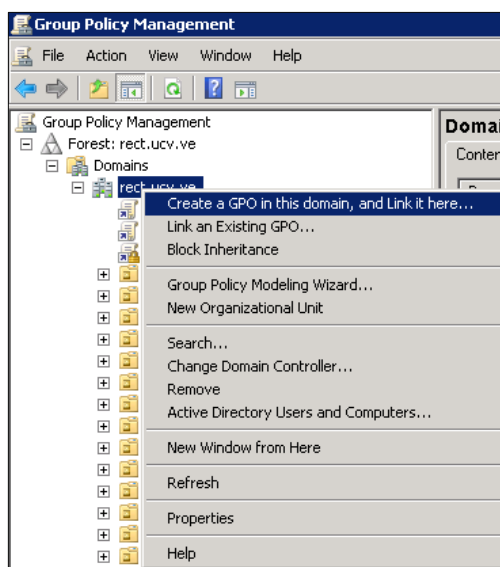


**IINSTRUCTIVO DE CONFIGURACIÓN DE LAS POLITICAS DE GRUPO EN ACTIVE DIRECTORY PARA  
CONECTAR LAS ESTACIONES DE TRABAJO AL SERVIDOR DE ACTUALIZACIONES DE MICROSOFT  
WINDOWS (WSUS)**

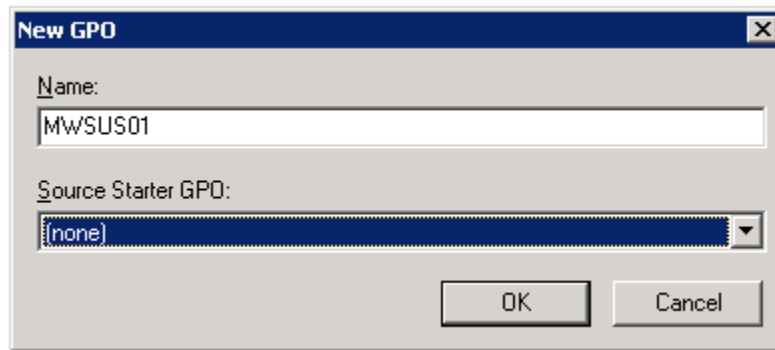
1. Abrir **Group Policy Managment** (administrador de políticas de grupo)



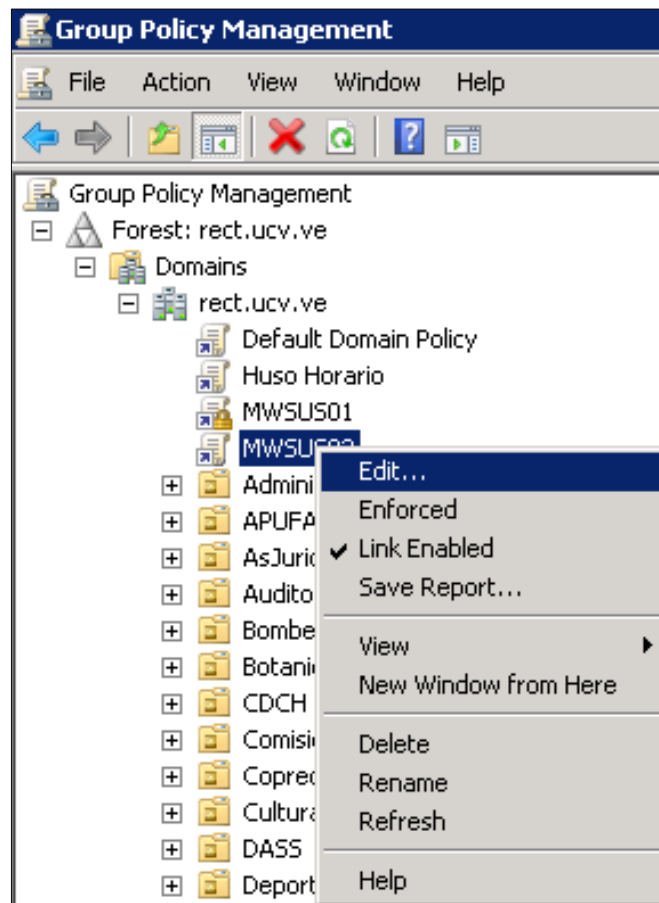
2.- Hacer clic con el botón derecho del mouse sobre el dominio y seleccionar **CREATE A GPO IN THIS DOMAIN...** como se muestra en la siguiente imagen;



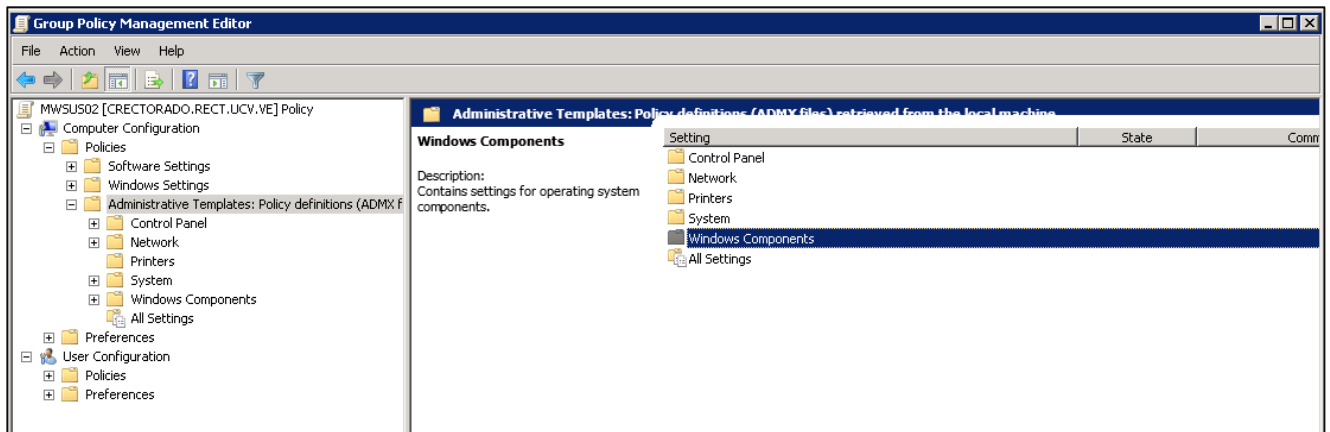
3.- Colocarle nombre a la nueva GPO, en este caso MWSUS01



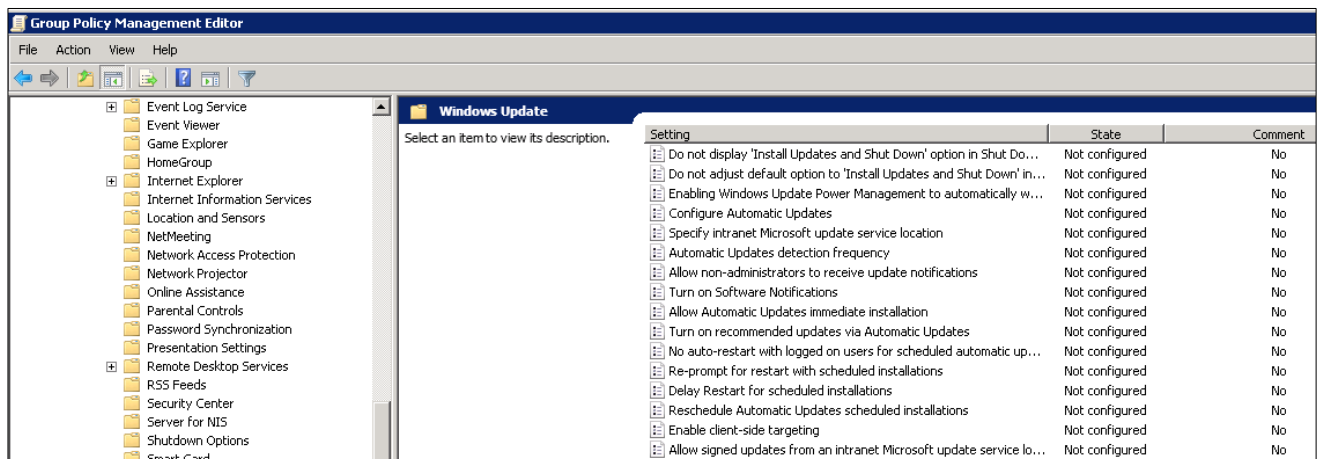
4.- Ubicar la nueva GPO que hemos creado, clic con el botón derecho del mouse y seleccionar **Edit...** como se muestra en la siguiente imagen;



5.- Desplegar las Opciones que aparecen en la ventana, ir a **COMPUTER CONFIGURACION/ ADMINISTRATIVE TEMPLATE: POLICY DEFINITIONS.../ WINDOWS COMPONENTS**. Como se muestra en la imagen;



6.- Una vez ubicados dentro de la carpeta **WINDOWS COMPONENTS**, ubicar la carpeta **WINDOWS UPDATE**, donde se encuentran las opciones a parametrizar para configurar nuestros equipos con el servidor de actualizaciones de Windows WSUS.

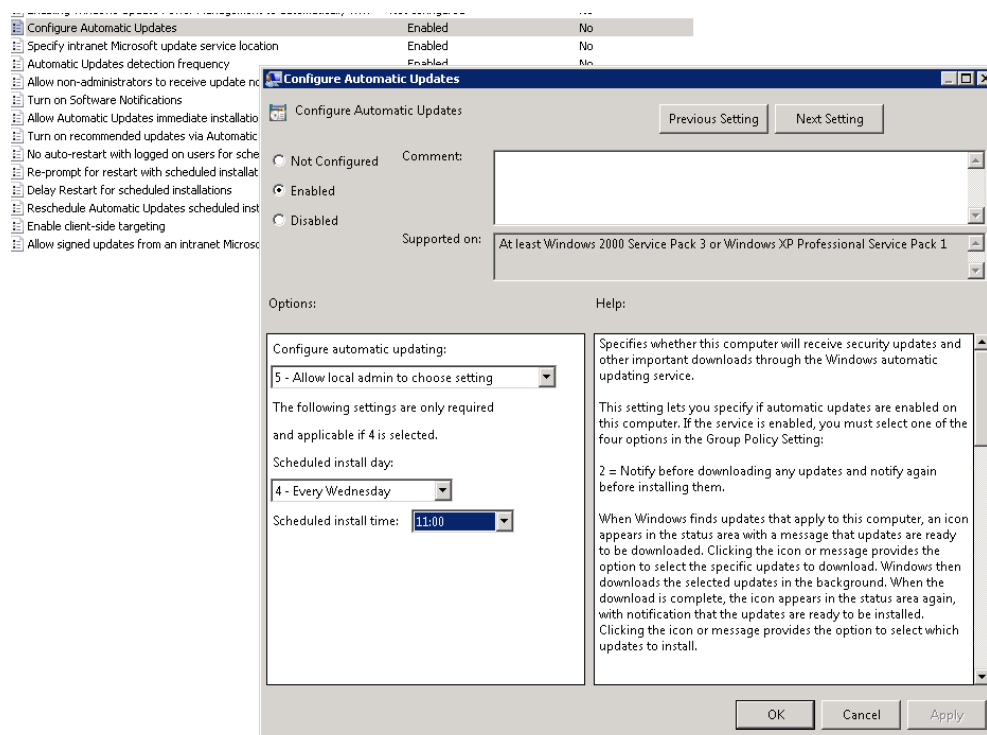


7.- Las opciones a configurar son las que se muestran en la siguiente imagen en **ENABLED**

Setting	State
Do not display 'Install Updates and Shut Down' option in Shut Do...	Not configured
Do not adjust default option to 'Install Updates and Shut Down' in...	Not configured
Enabling Windows Update Power Management to automatically w...	Not configured
Configure Automatic Updates	Enabled
Specify intranet Microsoft update service location	Enabled
Automatic Updates detection frequency	Enabled
Allow non-administrators to receive update notifications	Enabled
Turn on Software Notifications	Enabled
Allow Automatic Updates immediate installation	Enabled
Turn on recommended updates via Automatic Updates	Enabled
No auto-restart with logged on users for scheduled automatic up...	Enabled
Re-prompt for restart with scheduled installations	Not configured
Delay Restart for scheduled installations	Not configured
Reschedule Automatic Updates scheduled installations	Not configured
Enable client-side targeting	Not configured
Allow signed updates from an intranet Microsoft update service lo...	Enabled

7.1.- **Opción 1: Configure Automatic Updates** (Configurar actualizaciones automáticas). Especifica si la computadora recibirá las actualizaciones a través del servicio de actualizaciones automáticas.

- **Enabled:** según la opción elegida (2, 3, 4 o 5) las actualizaciones tendrán un comportamiento específico. **En nuestro caso será la opción 5.**
- **Disabled:** las actualizaciones deberán bajarse e instalarse manualmente.
- **Not configured:** el uso no está especificado por políticas.




**7.2 Opción 2: Specify intranet Microsoft update service location** (Especificar la ubicación del servicio Microsoft Update en la intranet).

- **Enabled:** deberemos ingresar la url (<http://190.169.31.13:80>) de intranet donde está instalado el servidor de Actualizaciones. Deberemos ingresar la misma url en ambos campos.
- **Disabled:** el cliente de actualizaciones automáticas se conectará a internet (si las actualizaciones automáticas no están deshabilitadas).
- **Nota:** Si la política Configurar actualizaciones automáticas está deshabilitada, ésta política no tiene efecto.

3 or k 1	Specify intranet Microsoft update service location	Enabled	No
	Automatic Updates detection frequency	Enabled	No
	Allow non-administrators to receive update notifications	Enabled	No
	Turn on Software Notifications	Enabled	No
can	Allow Automatic Updates immediate installation	Enabled	No
	Turn on recommended updates via Automatic Updates	Enabled	No

 Specify intranet Microsoft update service location

Previous Setting

Next Setting

☐ Not Configured

Comment:

☒ Enabled

☐ Disabled

Supported on:

At least Windows 2000 Service Pack 3 or Windows XP Professional Service Pack 1

Options:

Help:

Set the intranet update service for detecting updates:

Set the intranet statistics server:

(example: <http://IntranetUpd01>)

Specifies an intranet server to host updates from Microsoft Update. You can then use this update service to automatically update computers on your network.

This setting lets you specify a server on your network to function as an internal update service. The Automatic Updates client will search this service for updates that apply to the computers on your network.

To use this setting, you must set two servername values: the server from which the Automatic Updates client detects and downloads updates, and the server to which updated workstations upload statistics. You can set both values to be the same server.

If the status is set to Enabled, the Automatic Updates client connects to the specified intranet Microsoft update service, instead of Windows Update, to search for and download updates. Enabling this setting means that end users in your organization don't have to go through a firewall to get updates, and it gives you the opportunity to test updates before deploying them.

OK

Cancel

Apply

### 7.3 Opcion 3: **Automatic Updates detection frequency** (Frecuencia de detección de Actualizaciones automáticas).

- **Enabled:** chequea por actualizaciones disponibles según el intervalo especificado (1 a 22 horas).
  - **Disabled:** chequea por actualizaciones disponibles cada 22 horas.
  - **Not configured:** igual a disabled.
  - **Nota:** Debe estar habilitada la política “Especificar la ubicación del servicio Microsoft Update en la intranet”.
- Si la política Configurar actualizaciones automáticas está deshabilitada, ésta política no tiene efecto.

Automatic Updates detection frequency	Enabled	No
Allow non-administrators to receive update notifications	Enabled	No
Turn on Software Notifications	Enabled	No
Allow Automatic Updates immediate installation	Enabled	No

**Automatic Updates detection frequency**

Automatic Updates detection frequency

Previous Setting Next Setting

☐ Not Configured Comment:

☒ Enabled

☐ Disabled

Supported on: At least Windows 2000 Service Pack 3 or Windows XP Professional Service Pack 1

Options:

Check for updates at the following interval (hours): 3

Help:

Specifies the hours that Windows will use to determine how long to wait before checking for available updates. The exact wait time is determined by using the hours specified here minus zero to twenty percent of the hours specified. For example, if this policy is used to specify a 20 hour detection frequency, then all clients to which this policy is applied will check for updates anywhere between 16 and 20 hours.

If the status is set to Enabled, Windows will check for available updates at the specified interval.

If the status is set to Disabled or Not Configured, Windows will check for available updates at the default interval of 22 hours.

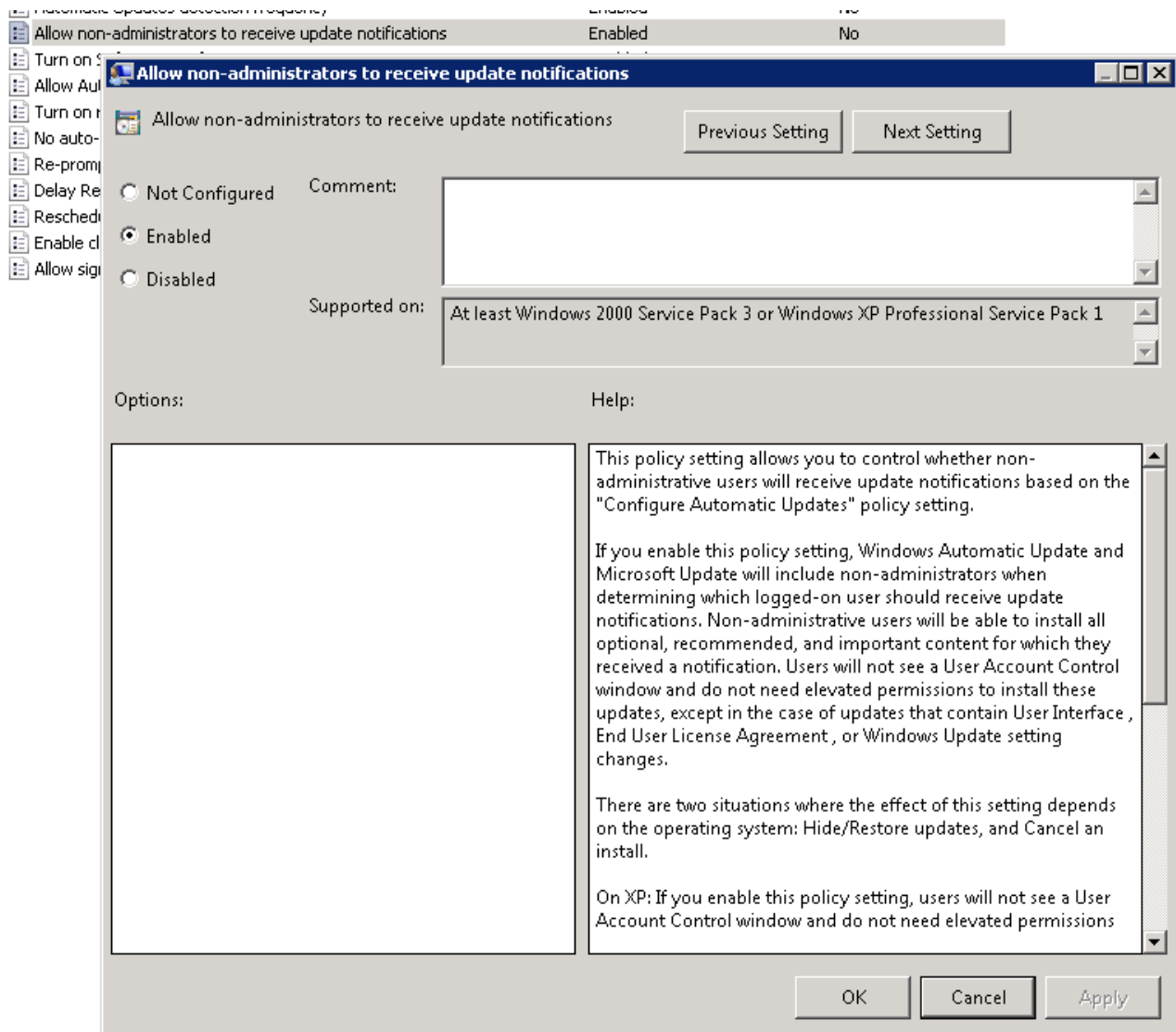
Note: The "Specify intranet Microsoft update service location" setting must be enabled for this policy to have effect.

Note: If the "Configure Automatic Updates" policy is disabled, this policy has no effect.

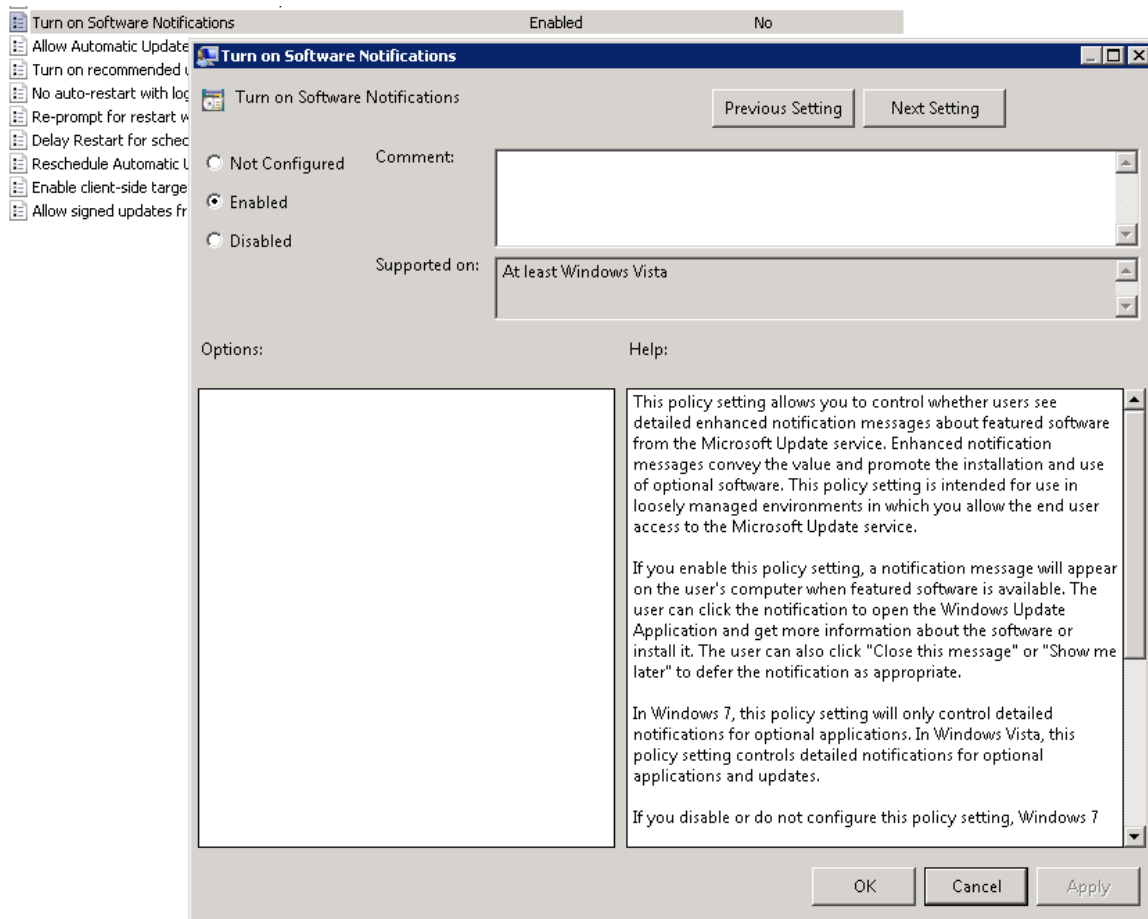
OK Cancel Apply

7.4 **Opción 4: Allow non-administrators to receive update notifications** (Permitir que los usuarios que no sean administradores reciban notificaciones).

- **Enabled:** notificará a cualquier usuario logueado.
- **Disabled:** solo notificará solo si el usuario es administrador.
- **Not configured:** igual a Disabled.
- **Nota:** Si la política Configurar actualizaciones automáticas está deshabilitada, ésta política no tiene efecto.



## 7.5 Opción 5: Turn on Software Notifications (Activar el Software Notificaciones)



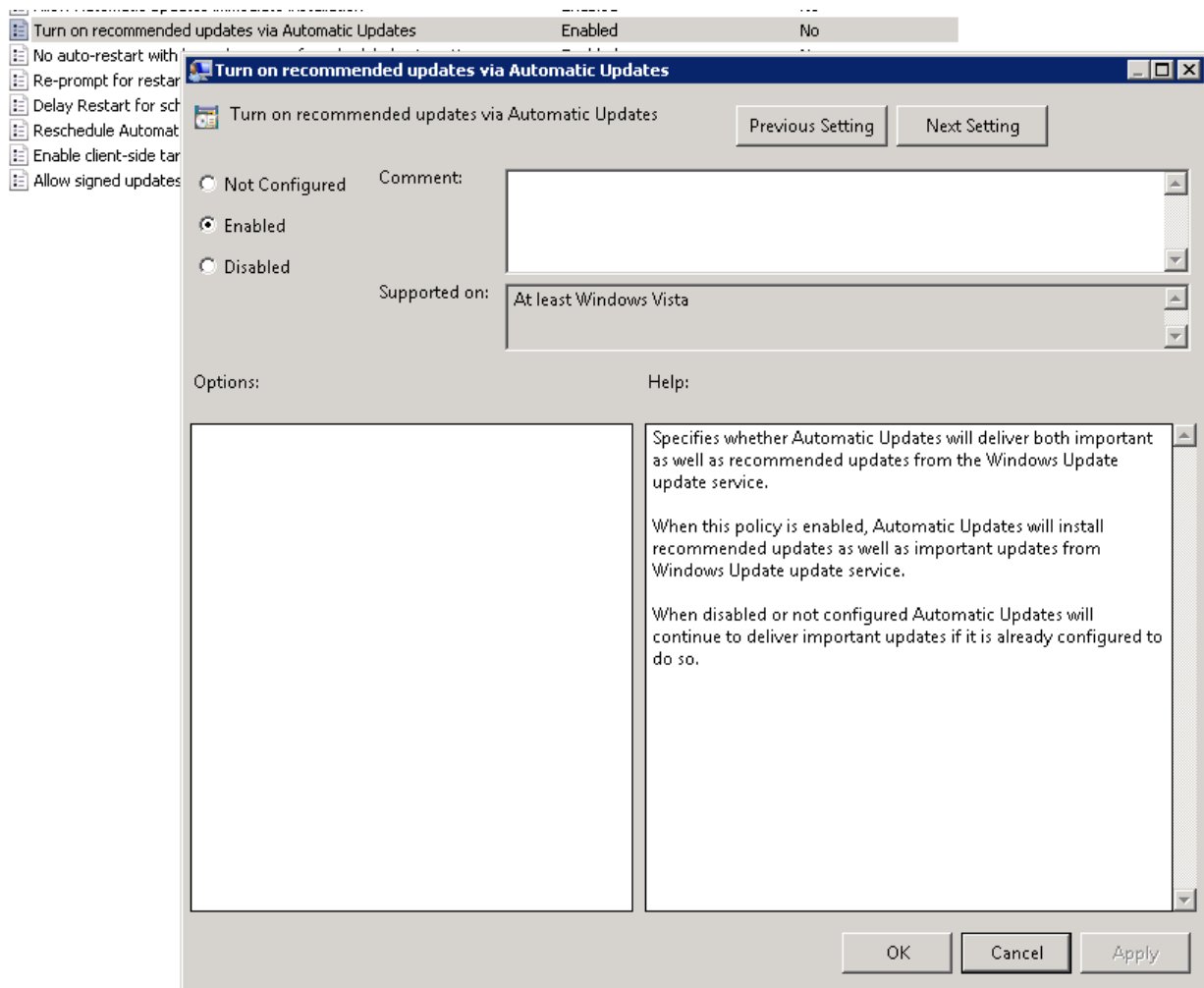


7.6 **Opción 6: Allow Automatic Updates immediate installation** (Permitir la instalación inmediata de Actualizaciones automáticas). Para aquellas actualizaciones que no interrumpen los servicios de Windows o no requieran reinicio.

- **Enabled:** se instalarán inmediatamente una vez que hayan sido bajadas y estén listas para instalar.
- **Disabled:** las actualizaciones no serán instaladas inmediatamente.
- **Nota:** Si la política Configurar actualizaciones automáticas está deshabilitada, ésta política no tiene efecto.

The screenshot shows the Group Policy Editor window. On the left, the tree view is expanded to 'Computer Configuration' > 'Administrative Templates' > 'Windows Updates'. The policy 'Allow Automatic Updates immediate installation' is selected and highlighted in blue. The main pane shows the details for this policy. At the top, the title bar reads 'Allow Automatic Updates immediate installation'. Below the title bar, there are 'Previous Setting' and 'Next Setting' buttons. The policy is currently set to 'Enabled' (indicated by a selected radio button). There is a 'Comment:' text box which is empty. Below the radio buttons, the 'Supported on:' field is set to 'At least Windows 2000 Service Pack 3 or Windows XP Professional Service Pack 1'. At the bottom, there are 'Options:' and 'Help:' sections. The 'Options' section is empty. The 'Help' section contains the following text: 'Specifies whether Automatic Updates should automatically install certain updates that neither interrupt Windows services nor restart Windows. If the status is set to Enabled, Automatic Updates will immediately install these updates once they are downloaded and ready to install. If the status is set to Disabled, such updates will not be installed immediately. Note: If the "Configure Automatic Updates" policy is disabled, this policy has no effect.' At the bottom right of the window are 'OK', 'Cancel', and 'Apply' buttons.

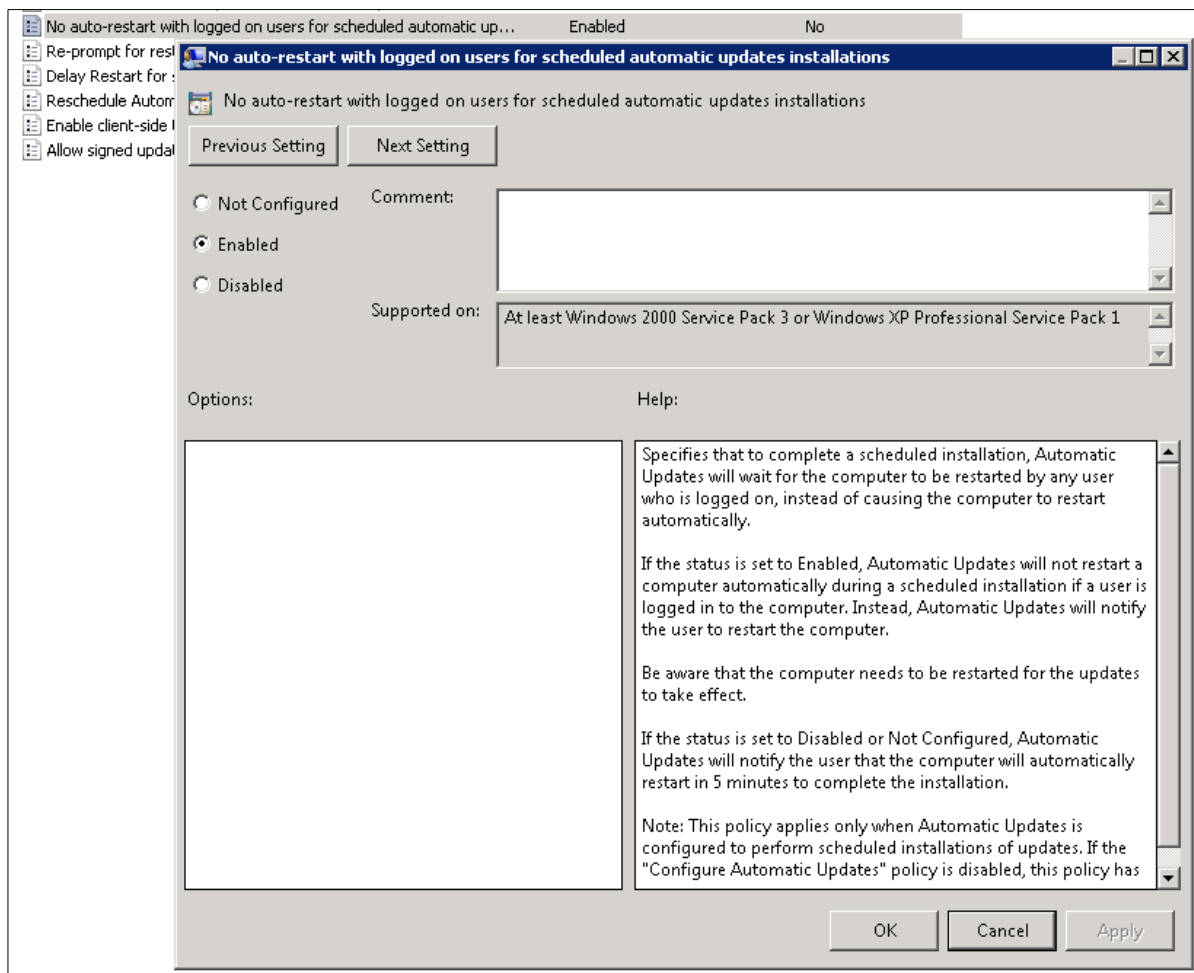
**7.7.- Opción 7: Turn on recommended updates via Automatic Updates** (Activar las actualizaciones recomendadas a través de actualizaciones automáticas).



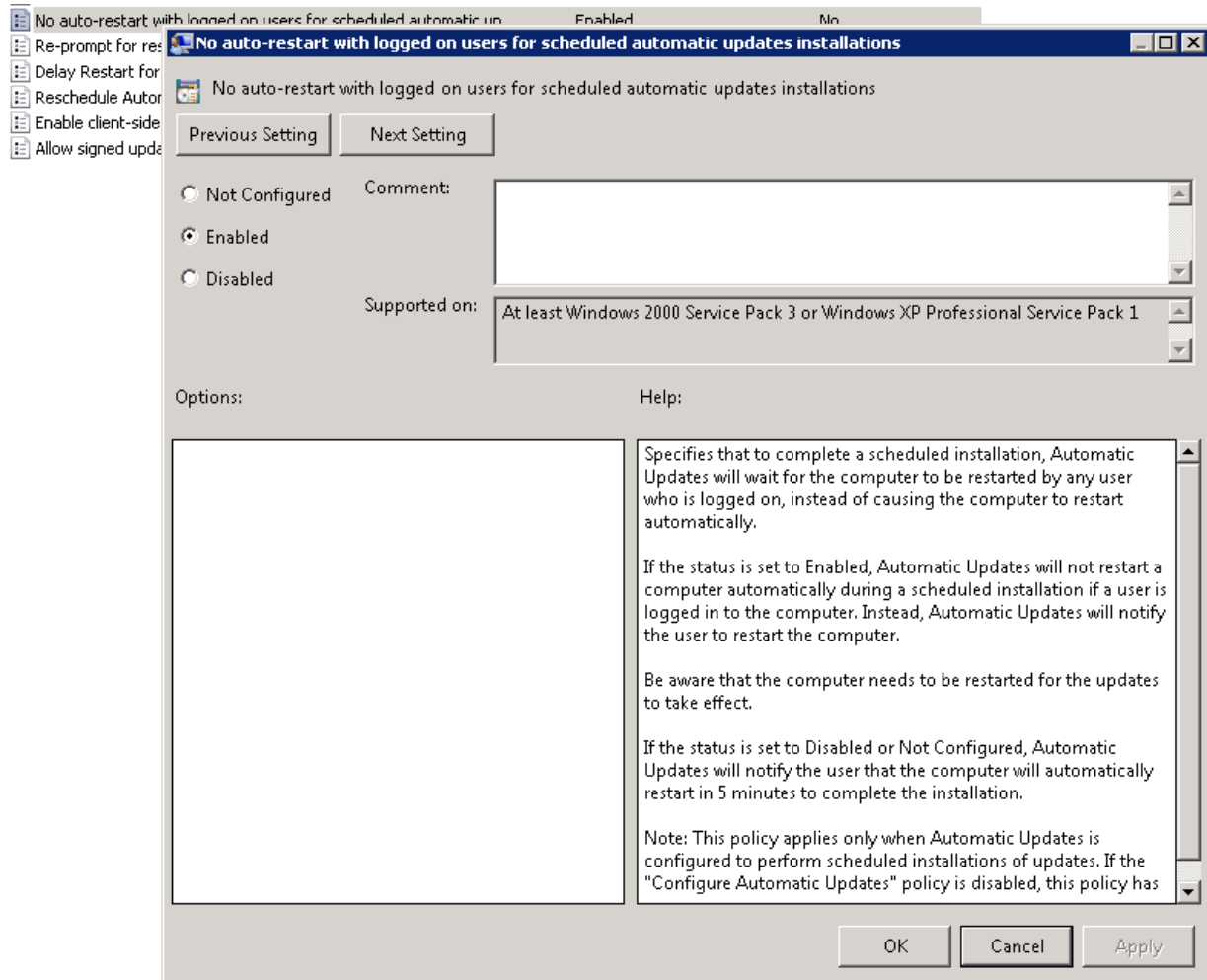
7.8.- **Opción 8: No auto-restart for scheduled Automatic Updates installations** (No reiniciar automáticamente en instalaciones de Actualizaciones automáticas). Una vez instaladas las actualizaciones, la computadora no se reiniciará automáticamente.

- **Enabled:** no reiniciará la computadora automáticamente si un usuario está logueado. Solo notificará que debería reiniciarse el sistema.
- **Disabled:** notificará al usuario que la computadora se reiniciará en 5 minutos.
- **Not configured:** Igual a disabled.
- **Nota:** Solo se aplica si las Actualizaciones Automáticas están configuradas para realizar una instalación programada.

Si la política Configurar actualizaciones automáticas está deshabilitada, ésta política no tiene efecto.



7.9.- **Opcion 9: No auto-restart wiht logged on users for scheduled automatic updates installations** (No reiniciar automáticamente cuando existan usuarios logeados en instalaciones de actualizaciones automáticas programadas).



7.10.- **Opción 10: Allow signed updates from an intranet Microsoft update service location** (Permitir actualizaciones firmados desde una intranet local de servicio de actualización de Microsoft).

The screenshot shows the Windows Group Policy Editor window. The title bar reads 'Allow signed updates from an intranet Microsoft update service lo...'. The status bar at the top indicates 'Enabled' and 'No'. The main window title is 'Allow signed updates from an intranet Microsoft update service location'. Below the title bar, there are buttons for 'Previous Setting' and 'Next Setting'. The policy is currently set to 'Enabled', indicated by a selected radio button. To the right of the radio buttons is a 'Comment:' text box. Below the radio buttons is a 'Supported on:' text box with the value 'At least Windows XP Professional with SP1 or Windows Server 2003 family'. Below these are two sections: 'Options:' and 'Help:'. The 'Options:' section is empty. The 'Help:' section contains the following text: 'This policy setting allows you to manage whether Automatic Updates accepts updates signed by entities other than Microsoft when the update is found on an intranet Microsoft update service location. If you enable this policy setting, Automatic Updates accepts updates received through an intranet Microsoft update service location, if they are signed by a certificate found in the "Trusted Publishers" certificate store of the local computer. If you disable or do not configure this policy setting, updates from an intranet Microsoft update service location must be signed by Microsoft. Note: Updates from a service other than an intranet Microsoft update service must always be signed by Microsoft and are not affected by this policy setting.' At the bottom right are buttons for 'OK', 'Cancel', and 'Apply'.

Allow signed updates from an intranet Microsoft update service lo... Enabled No

Allow signed updates from an intranet Microsoft update service location Previous Setting Next Setting

☐ Not Configured Comment:

☒ Enabled

☐ Disabled

Supported on: At least Windows XP Professional with SP1 or Windows Server 2003 family

Options:

Help:

This policy setting allows you to manage whether Automatic Updates accepts updates signed by entities other than Microsoft when the update is found on an intranet Microsoft update service location.

If you enable this policy setting, Automatic Updates accepts updates received through an intranet Microsoft update service location, if they are signed by a certificate found in the "Trusted Publishers" certificate store of the local computer.

If you disable or do not configure this policy setting, updates from an intranet Microsoft update service location must be signed by Microsoft.

Note: Updates from a service other than an intranet Microsoft update service must always be signed by Microsoft and are not affected by this policy setting.

OK Cancel Apply